



Stainless Steel

Screwed Fittings & Valves



MAXVALUE INDUSTRIES CO.,LTD.

Address:Unit1301,East Tower,The Ninth Zhongshan,No.2,Xinglin Street,Dalian,China.
Tel:0086-411-88800222/88800299/88800220/82812887
Fax:0086-411-82821131 E-mail:info@maxvalue.net Http://www.maxvalue.net

 **MAXVALUE INDUSTRIES CO.,LTD.**

We are specialized in manufacturing and exporting stainless steel lost wax casting products. In order to ensure good quality of the products, various advanced test and analysis instruments are equipped in our factory. Your any enquiries will be welcome.

Main Products:

- Stainless steel lost wax casting screwed fittings
- Stainless steel ball valves
- Sanitary valves and fittings
- Quick couplings
- OEM components as per clients' design



POURING



WAX INJECTION



SHELL-MAKING AND DRYING



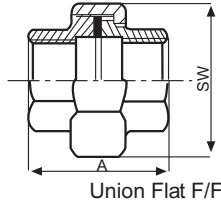
SPECTROMETER



CNC LATHE

MAXVALUE INDUSTRIES CO.,LTD.

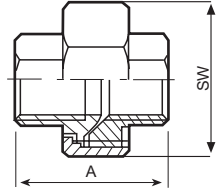
MV-1A Union Conical Joint F/F Union Flat Seat With Teflon Gasket F/F



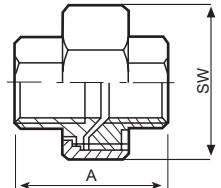
Union Flat F/F

Unit:mm

Size	A	SW
1/8"	31.5	30.6
1/4"	31.5	30.6
3/8"	33.0	35.0
1/2"	37.5	37.1
3/4"	40.0	46.3
1"	48.0	52.2
1 1/4"	52.5	65.9
1 1/2"	54.6	72.4
2"	65.0	89.0
2 1/2"	73.3	108.0
3"	74.0	121.6
4"	95.0	149.1

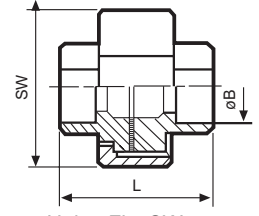


Union Conical F/F



Union Conical F/F

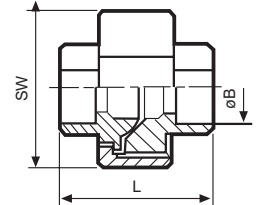
MV-1B Union Conical Joint Socket Weld Union Flat Seat With Teflon Gasket Socket Weld



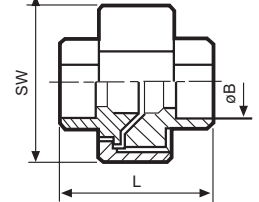
Union Flat SW

Unit:mm

Size	øB	L	SW
1/8"	11.0	29.0	25.0
1/4"	14.4	37.5	30.0
3/8"	17.8	38.0	35.0
1/2"	22.0	42.0	42.0
3/4"	27.4	50.4	47.0
1"	34.1	48.0	53.0
1-1/4"	42.9	59.0	71.0
1-1/2"	48.9	65.0	78.0
2"	61.4	69.0	92.0
2 1/2"	74.1	80.0	112.0
3"	90.1	88.0	127.0
4"	115.7	108.0	157.0

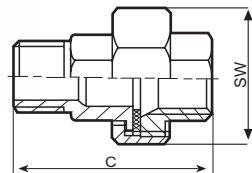


Union Conical SW



Union Conical SW

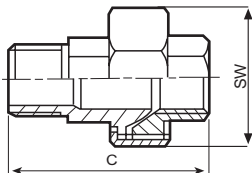
MV-1C Union Conical Joint M/F Union Flat Seat With Teflon Gasket M/F



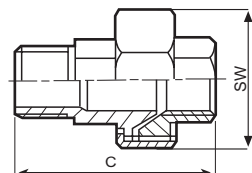
UNION FLAT F/F

Unit:mm

Size	C	SW
1/8"	44.6	31.0
1/4"	44.6	31.0
3/8"	46.9	35.5
1/2"	56.1	37.0
3/4"	60.3	46.0
1"	70.0	52.3
1 1/4"	78.0	65.9
1 1/2"	85.0	72.4
2"	93.7	89.5
2 1/2"	103.5	107.7
3"	118.0	121.6
4"	135.0	153.0

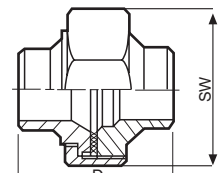
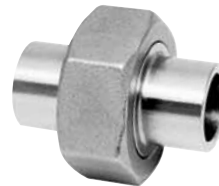


UNION CONICAL F/F



UNION CONICAL F/F

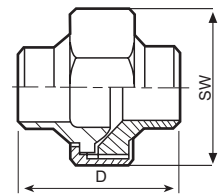
MV-1E Union Conical Joint BW/BW Union Flat Seat With Teflon Gasket BW/BW



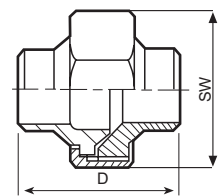
UNION FLAT F/F

Unit:mm

Size	D	SW
1/8"	29.0	32.0
1/4"	42.0	34.0
3/8"	42.0	34.0
1/2"	47.5	38.0
3/4"	50.0	47.0
1"	55.0	54.0
1 1/4"	61.5	63.0
1 1/2"	64.0	71.5
2"	69.0	87.0
2 1/2"	81.0	112.5
3"	92.5	126.5
4"	108.0	153.0



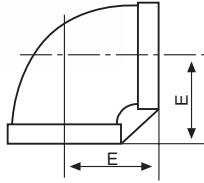
UNION CONICAL F/F



UNION CONICAL F/F

MAXVALUE INDUSTRIES CO.,LTD.

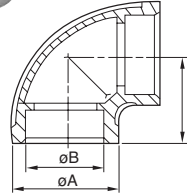
MV-2A Elbow 90 Equal F/F



Unit:mm

Size	E
1/8"	15.4
1/4"	18.2
3/8"	22.68
1/2"	26.6
3/4"	31.6
1"	37.1
1 1/4"	42.3
1 1/2"	47.9
2"	56.0
2 1/2"	67.1
3"	76.2
4"	94.1

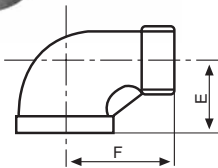
MV-2B Elbow 90 Socket Weld



Unit:mm

Size	øA	øB	L
1/8"	17.0	11.0	19.0
1/4"	21.3	14.4	21.0
3/8"	23.5	17.8	21.3
1/2"	29.0	22.0	27.0
3/4"	36.0	27.4	33.0
1"	43.0	34.1	38.0
1-1/4"	52.0	42.9	45.0
1-1/2"	58.5	48.9	50.0
2"	71.5	61.4	57.0
2 1/2"	87.0	74.1	69.7
3"	99.5	90.1	77.0
4"	126.0	115.7	98.2

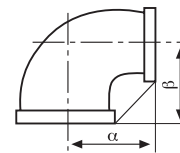
MV-2C Street Elbow 90 M/F



Unit:mm

Size	E	F
1/8"	17.0	24.3
1/4"	20.5	29.3
3/8"	23.5	32.0
1/2"	29.0	39.0
3/4"	32.4	47.7
1"	37.3	53.0
1 1/4"	43.2	59.0
1 1/2"	47.2	67.0
2"	57.0	74.0
2 1/2"	69.0	92.0
3"	79.0	105.0
4"	96.0	146.5

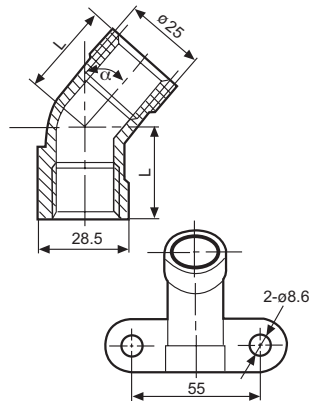
MV-2D Reducing Elbow 90 F/F



Unit:mm

SIZE	α	β
1/4"X1/8"	21.0	17.0
3/8"X1/4"	22.0	21.0
1/2"X3/8"	26.0	23.5
3/4"X3/8"	27.0	25.5
3/4"X1/2"	28.7	28.4
1"X1/2"	32.0	33.2
1"X3/4"	34.7	34.0
1 1/4"X3/4"	39.8	37.0
1 1/4"X1"	40.4	38.4
1 1/2"X1"	44.5	43.0
1 1/2"X1 1/4"	48.2	45.5
2"X1 1/2"	53.5	48.1

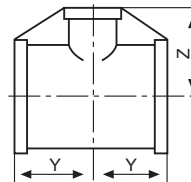
MV-2E Elbow With Strip F/F



Unit:mm

Size	α	L
1/2"	40°	22.8
1/2"	60°	25.6
1/2"	75°	28.5
1/2"	90°	27.7

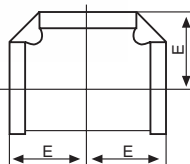
MV-3C Reducing Tee F/F



Unit:mm

SIZE	Y	Z
1/2"X1/8"	20.0	24.0
1/2"X1/4"	22.0	24.6
1/2"X3/8"	24.4	28.0
3/4"X1/4"	23.0	29.0
3/4"X3/8"	26.0	29.3
3/4"X1/2"	29.5	29.7
1"X1/4"	28.0	31.0
1"X3/8"	30.0	31.0
1"X1/2"	32.0	33.4
1"X3/4"	34.0	37.2
1-1/4"X3/8"	32.0	37.6
1-1/4"X1/2"	33.0	38.0
1-1/4"X3/4"	36.0	40.0
1-1/4"X1"	40.0	43.0
1-1/2"X3/8"	34.0	40.0
1-1/2"X1/2"	34.7	41.4
1-1/2"X3/4"	38.0	43.0
1-1/2"X1"	41.0	44.0
1-1/2"X1-1/4"	46.5	46.2
2"X1/2"	36.0	48.0
2"X3/4"	38.0	50.0
2"X1"	41.9	50.0
2"X1-1/4"	46.0	53.5
2"X1-1/2"	50.0	54.0

MV-3A Tee Equal F/F

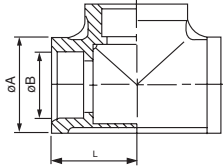


Unit:mm

Size	E
1/8"	17.1
1/4"	18.9
3/8"	23.0
1/2"	27.3
3/4"	31.7
1"	35.9
1 1/4"	42.7
1 1/2"	47.8
2"	56.0
2 1/2"	66.5
3"	76.0
4"	93.5

MAXVALUE INDUSTRIES CO.,LTD.

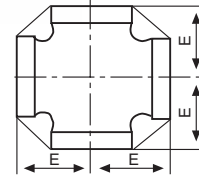
MV-3B Tee Socket Weld



Unit:mm

Size	ϕA	ϕB	L
1/8"	17.0	11.0	19.0
1/4"	21.3	14.4	21.0
3/8"	23.5	17.8	23.6
1/2"	30.0	22.0	28.0
3/4"	35.0	27.4	33.0
1"	43.0	34.1	38.0
1-1/4"	52.0	42.9	45.0
1-1/2"	58.5	48.9	50.0
2"	71.5	61.4	58.0
2 1/2"	87.0	74.1	70.0
3"	100.0	90.1	78.5
4"	125.0	115.7	97.0

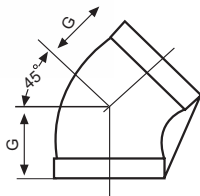
MV-4A Cross F/F



Unit:mm

Size	E
1/8"	17.0
1/4"	19.1
3/8"	23.0
1/2"	27.1
3/4"	31.3
1"	36.0
1 1/4"	42.3
1 1/2"	47.4
2"	55.3
2 1/2"	66.5
3"	76.4
4"	94.5

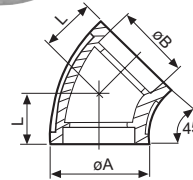
MV-5A Elbow 45 F/F



Unit:mm

Size	G
1/8"	17.0
1/4"	17.5
3/8"	20.0
1/2"	23.0
3/4"	25.0
1"	30.0
1 1/4"	31.0
1 1/2"	36.0
2"	43.5
2 1/2"	49.0
3"	54.0
4"	65.0

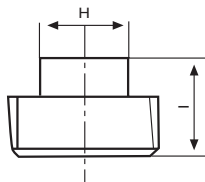
MV-5B Elbow 45 Socket Weld



Unit:mm

Size	ϕA	ϕB	L
1/8"	18.0	11.0	18.0
1/4"	21.0	14.4	19.4
3/8"	25.0	17.8	20.0
1/2"	29.5	22.0	22.0
3/4"	35.6	27.2	25.0
1"	43.0	34.1	28.0
1-1/4"	52.4	42.9	33.0
1-1/2"	58.0	48.9	36.0
2"	72.0	61.4	43.0
2 1/2"	87.0	74.1	50.0
3"	100.0	90.1	55.0
4"	125.5	115.7	64.0

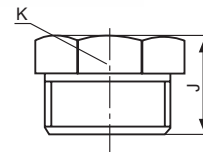
MV-6A Square Plug



Unit:mm

Size	H	I
1/8"	7.0	19.0
1/4"	8.05	15.9
3/8"	10.0	15.9
1/2"	14.0	22.7
3/4"	18.0	24.4
1"	19.0	26.4
1 1/4"	22.05	29.2
1 1/2"	22.2	30.7
2"	26.9	35.9
2 1/2"	31.8	40.5
3"	36	42.5

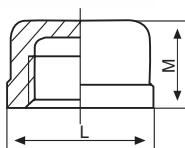
MV-6B Hexagon Plug



Unit:mm

Size	K	J
1/8"	13.0	16.0
1/4"	15.0	19.8
3/8"	19.0	19.8
1/2"	23.0	23.8
3/4"	28.7	25.6
1"	35.6	28.9
1 1/4"	44.9	30.8
1 1/2"	51.0	31.2
2"	63.0	35.4
2 1/2"	77.6	39.8
3"	92.0	44.0
4"	118.0	48.6

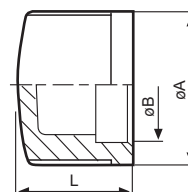
MV-7A Round Cap



Unit:mm

Size	L	M
1/8"	14.5	15.0
1/4"	17.5	15.2
3/8"	20.8	15.9
1/2"	27.6	19.5
3/4"	32.5	22.0
1"	40.5	25.5
1 1/4"	49.4	27.5
1 1/2"	56.3	31.9
2"	67.9	34.4
2 1/2"	84.6	38.5
3"	97.8	42.0
4"	123.0	43.7

MV-7B Round Cap Banded Socket Weld



Unit:mm

Size	ϕA	ϕB	L
1/8"	18.1	11.0	14.0
1/4"	21.1	14.4	17.0
3/8"	24.8	17.8	17.0
1/2"	27.5	22.0	19.0
3/4"	35.4	27.4	24.0
1"	42.1	34.1	29.0
1-1/4"	52.6	42.9	33.0
1-1/2"	57.7	48.9	34.0
2"	69.9	61.4	38.0
2 1/2"	92.1	74.1	41.0
3"	105.8	90.1	47.0
4"	134.0	115.7	53.0

MAXVALUE INDUSTRIES CO.,LTD.

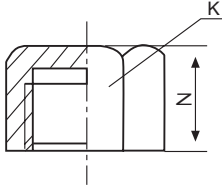
MV-7C

Hexagon Cap



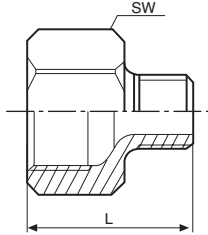
Unit:mm

Size	K	N
1/8"	13.0	15.3
1/4"	15.6	15.0
3/8"	19.0	16.0
1/2"	26.7	19.5
3/4"	30.5	21.5
1"	38.7	25.7
1 1/4"	47.7	28.0
1 1/2"	53.7	32.1
2"	66.3	34.0
2 1/2"	82.4	40.0
3"	96.0	40.0
4"	121.0	49.6



MV-8B

Negative Hexagon Bushing M/F



Unit:mm

SIZE	L	SW
1/4"x1/8"	27.0	17.0
3/8"x1/8"	29.0	21.0
3/8"x1/4"	30.5	21.0
1/2"x1/8"	32.5	26.0
1/2"x1/4"	34.0	26.0
1/2"x3/8"	34.5	26.0
3/4"x1/8"	33.5	32.0
3/4"x1/4"	35.0	32.0
3/4"x3/8"	35.5	32.0
3/4"x1/2"	38.5	32.0
1"x1/8"	36.5	38.0
1"x1/4"	38.0	38.0
1"x3/8"	38.5	38.0
1"x1/2"	41.0	38.0
1"x3/4"	44.0	38.0
1-1/4"x1/4"	40.0	50.0
1-1/4"x3/8"	40.0	50.0

Unit:mm

SIZE	L	SW
1-1/4"x1/2"	42.5	50.0
1-1/4"x3/4"	45.0	50.0
1-1/4"x1"	47.0	50.0
1-1/2"x1/4"	41.0	54.0
1-1/2"x3/8"	42.0	54.0
1-1/2"x1/2"	45.0	54.0
1-1/2"x3/4"	46.0	54.0
1-1/2"x1"	48.0	54.0
1-1/2"x1-1/4"	50.0	54.0
2"x1/4"	44.5	68.0
2"x3/8"	31.0	68.0
2"x1/2"	49.0	68.0
2"x3/4"	51.0	68.0
2"x1"	51.0	68.0
2"x1-1/4"	53.0	68.0
2"x1-1/2"	54.0	68.0

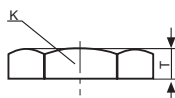
MV-9A

Hexagon Nut



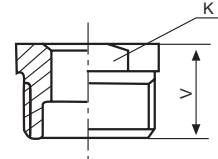
Unit:mm

Size	K	T
1/8"	21.0	6.0
1/4"	21.0	6.2
3/8"	26.0	7.2
1/2"	31.0	8.0
3/4"	35.0	9.2
1"	45.0	10.0
1 1/4"	54.0	11.2
1 1/2"	58.9	11.9
2"	73.7	13.3



MV-8A

Hexagon Bushing M/F



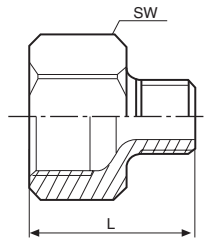
Unit:mm

SIZE	V	K
1/4"x1/8"	19.0	15.0
3/8"x1/8"	21.0	19.0
3/8"x1/4"	21.0	19.0
1/2"x1/8"	24.0	22.8
1/2"x1/4"	24.0	23.0
1/2"x3/8"	24.0	23.0
3/4"x1/4"	25.5	28.7
3/4"x3/8"	25.7	28.8
3/4"x1/2"	26.0	28.8
1"x1/4"	27.0	35.5
1"x3/8"	27.0	35.0
1"x1/2"	27.0	35.0
1"x3/4"	27.0	35.0
1-1/4"x1/2"	30.0	44.0
1-1/4"x3/4"	30.0	44.0
1-1/4"x1"	30.0	44.0
1-1/2"x3/8"	31.0	51.0
1-1/2"x1/2"	31.0	51.0

SIZE	V	K
1-1/2"x3/4"	36.0	52.0
1-1/2"x1"	36.0	52.0
1-1/2"x1-1/4"	36.0	52.0
2"x1/4"	36.0	63.0
2"x1/2"	36.0	63.0
2"x3/4"	36.0	63.0
2"x1"	36.0	63.0
2"x1-1/4"	36.0	63.0
2"x1-1/2"	36.0	63.0
2-1/2"x1"	45.0	81.0
2-1/2"x1-1/4"	45.0	81.0
2-1/2"x1-1/2"	45.0	81.0
2-1/2"x2"	45.0	81.0
3"x1-1/2"	47.0	95.0
3"x2"	47.0	95.0
3"x2-1/2"	52.0	95.0
4"x2"	52.0	119.0
4"x2-1/2"	52.0	119.0
4"x3"	52.0	119.0

MV-8C

Adaptor M/F

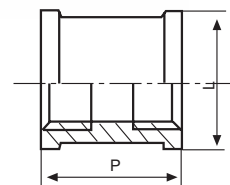


Unit:mm

Size	L	SW
1/8"	26.0	15.0
1/4"	28.5	17.0
3/8"	31.0	21.0
1/2"	37.5	26.0
3/4"	41.0	32.0
1"	46.0	38.0
1 1/4"	49.0	50.0
1 1/2"	51.0	54.0
2"	57.0	68.0

MV-10A

Socket (Coupling) Banded F/F

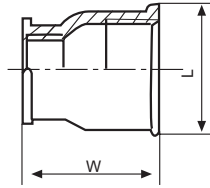


Unit:mm

Size	L	P
1/2"	27.7	35.0
3/4"	32.5	39.4
1"	41.0	45.8
1 1/4"	49.5	50.2
1 1/2"	56.4	53.6
2"	67.5	62.6
2 1/2"	84.5	68.5
3"	96.6	76.7

MAXVALUE INDUSTRIES CO.,LTD.

MV-10B Reducing Socket (Coupling) Banded F/F

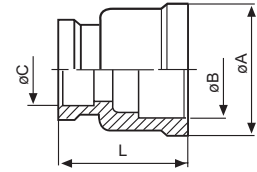


Unit:mm

SIZE	L	W
1/4"x1/8"	21.5	26.0
3/8"x1/8"	23.5	28.3
3/8"x1/4"	23.7	29.7
1/2"x1/8"	26.5	36.0
1/2"x1/4"	27.3	37.0
1/2"x3/8"	27.2	37.0
3/4"x1/8"	32.7	38.0
3/4"x1/4"	32.7	34.5
3/4"x3/8"	32.7	36.5
3/4"x1/2"	32.7	38.0
1"x1/8"	40.0	37.0
1"x1/4"	40.0	37.0
1"x3/8"	40.0	39.0
1"x1/2"	40.0	42.0
1"x3/4"	40.0	42.0
1-1/4"x1/2"	49.4	47.4
1-1/4"x3/4"	49.4	43.0
1-1/4"x1"	49.4	49.0
1-1/2"x3/8"	55.7	43.0
1-1/2"x1/2"	55.7	45.6

SIZE	L	W
1-1/2"x3/4"	55.1	45.7
1-1/2"x1"	55.1	47.3
1-1/2"x1 1/4"	55.1	49.0
2"x1/2"	68.2	45.9
2"x3/4"	67.9	46.0
2"x1"	67.4	46.0
2"x1-1/4"	68.0	46.0
2"x1-1/2"	68.0	49.5
2-1/2"x1"	84.6	57.0
2-1/2"x1-1/4"	84.6	57.0
2-1/2"x1-1/2"	84.6	57.0
2-1/2"x2"	84.6	60.0
3"x1"	98.2	62.0
3"x1-1/4"	98.2	62.0
3"x1-1/2"	98.2	62.0
3"x2"	98.2	62.0
3"x2-1/2"	98.2	68.0
4"x2-1/2"	128.0	65.0
4"x3"	128.0	65.0

MV-10C Reducing Socket (Coupling) Banded SW



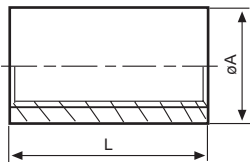
Unit:mm

Unit:mm

SIZE	øA	øB	øC	L
1/4"x1/8"	21.3	14.1	10.7	26.8
3/8"x1/8"	25.0	17.5	10.7	28.0
3/8"x1/4"	26.0	17.5	14.1	28.7
1/2"x1/8"	29.0	27.1	10.7	34.0
1/2"x1/4"	30.0	27.1	14.1	34.0
1/2"x3/8"	30.0	27.1	17.5	34.0
3/4"x1/8"	36.7	27.1	10.7	38.0
3/4"x1/4"	36.7	27.1	14.1	38.0
3/4"x3/8"	36.7	27.1	17.5	38.0
3/4"x1/2"	36.7	27.1	21.7	37.0
1"x1/8"	43.0	33.8	10.7	42.0
1"x1/4"	43.0	33.8	14.1	42.0
1"x3/8"	43.0	33.8	17.5	42.0
1"x1/2"	43.0	33.8	21.7	42.0
1"x3/4"	43.0	33.8	27.1	42.0
1-1/4"x1/4"	52.0	42.6	14.1	48.0
1-1/4"x3/8"	52.0	42.6	17.5	48.0
1-1/4"x1/2"	52.0	42.6	21.7	48.0
1-1/4"x3/4"	52.0	42.6	27.1	48.0
1-1/4"x1"	52.8	42.6	33.8	51.5
1-1/2"x3/8"	59.0	48.6	17.5	48.0
1-1/2"x1/2"	59.0	48.6	21.7	49.0
1-1/2"x3/4"	59.0	48.6	27.1	51.0

SIZE	øA	øB	øC	L
1-1/2"x1"	59.0	48.6	33.8	53.0
1-1/2"x1-1/4"	59.0	48.6	42.6	53.5
2"x1/2"	72.0	61.1	21.7	50.5
2"x3/4"	72.0	61.1	27.1	51.2
2"x1"	72.0	61.1	33.8	56.0
2"x1-1/4"	72.0	61.1	42.6	56.0
2"x1-1/2"	72.0	61.1	48.6	57.5
2-1/2"x3/4"	85.0	73.8	27.1	60.0
2-1/2"x1"	85.0	73.8	33.8	60.0
2-1/2"x1-1/4"	85.0	73.8	42.6	60.5
2-1/2"x1-1/2"	85.0	73.8	48.6	60.0
2-1/2"x2"	85.0	73.8	61.1	61.0
3"x1"	100.0	89.8	33.8	62.0
3"x1-1/4"	100.0	89.8	42.6	62.0
3"x1-1/2"	100.0	89.8	48.6	62.0
3"x2"	100.0	89.8	61.1	62.0
3"x2-1/2"	100.0	89.8	73.8	61.0
4"x1-1/4"	129.0	115.4	42.6	65.0
4"x1-1/2"	129.0	115.4	48.6	65.0
4"x2"	129.0	115.4	61.1	65.0
4"x2-1/2"	128.0	115.4	73.8	65.0
4"x3"	128.0	115.4	89.8	65.0

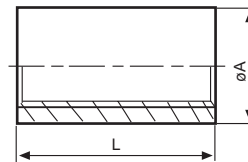
MV-10D Socket (Coupling) o.d.Machined F/F



Unit:mm

Size	øA	L
1/8"	13.0	18.5
1/4"	15.5	22.5
3/8"	19.0	24.0
1/2"	24.0	32.0
3/4"	29.0	34.0
1"	37.0	40.5
1 1/4"	46.0	45.0
1 1/2"	52.0	45.0
2"	64.0	54.0
2 1/2"	81.0	63.5
3"	94.0	68.0
4"	121.0	81.0

MV-10E Socket Plain F/F



Unit:mm

Unit:mm

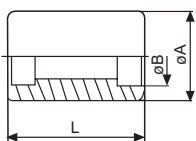
Size	øA	L
1/8"	14.0	20.0
1/4"	18.5	25.0
3/8"	21.5	26.0
1/2"	26.5	34.0
3/4"	32.0	36.0
1"	39.5	43.0
1 1/4"	48.5	48.0
1 1/2"	54.5	48.0
2"	66.5	56.0
2-1/2"	82.0	65.0
3"	95.0	71.0
4"	122.0	83.0

Size	øA	L
1/8"	14.0	20.0
1/4"	18.5	27.0
3/8"	21.5	28.0
1/2"	26.5	36.0
3/4"	32.0	39.0
1"	39.5	43.0
1 1/4"	48.5	48.0
1 1/2"	54.5	48.0
2"	66.5	56.0
2-1/2"	84.0	65.0
3"	100.0	71.0
4"	129.0	83.0

DIN/BSP/PT

NPT

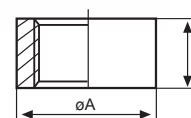
MV-10F Socket (Coupling) Plain SW



Unit:mm

Size	øA	øB	L
1/8"	16.0	11.0	26.0
1/4"	20.0	14.4	28.2
3/8"	23.0	17.8	30.8
1/2"	28.2	22.0	35.0
3/4"	34.8	27.4	40.3
1"	42.0	34.1	43.5
1 1/4"	48.5	42.9	50.0
1 1/2"	46.7	48.9	56.2
2"	70.5	61.4	65.0
2-1/2"	86.3	74.1	74.3
3"	105.0	90.1	82.0
4"	131.4	115.7	94.3

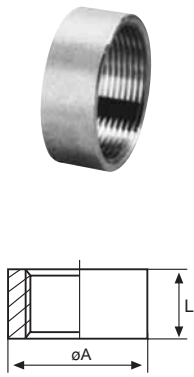
MV-10G Half Socket (Half Coupling) o.d. Machined F/F



Unit:mm

Size	øA	L
1/8"	13.0	9.0
1/4"	15.5	10.0
3/8"	19.0	10.5
1/2"	24.0	14.0
3/4"	29.0	15.5
1"	37.0	18.5
1 1/4"	46.0	20.5
1 1/2"	52.0	20.5
2"	64.0	25.0
2 1/2"	81.0	29.5
3"	94.0	32.5
4"	121.0	39.0

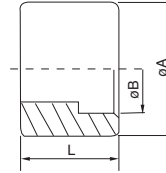
MV-10H Half Socket Plain F/F



Unit:mm			Unit:mm		
Size	øA	L	Size	øA	L
1/8"	14.0	11.0	1/8"	14.0	11.0
1/4"	18.5	11.0	1/4"	18.5	13.0
3/8"	21.5	12.0	3/8"	21.5	14.0
1/2"	26.5	15.0	1/2"	26.5	18.0
3/4"	32.0	17.0	3/4"	32.0	20.0
1"	39.5	19.0	1"	39.5	21.0
1 1/4"	48.5	22.0	1 1/4"	48.5	24.0
1 1/2"	54.5	22.0	1 1/2"	54.5	24.0
2"	66.5	26.0	2"	66.5	28.0
2 1/2"	82.0	30.0	2 1/2"	84.0	33.0
3"	95.0	33.0	3"	100.0	36.0
4"	122.0	40.0	4"	129.0	42.0

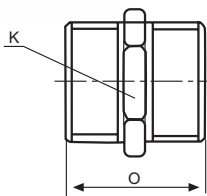
DIN/BSP/PT NPT

MV-10I Half Socket (Half Coupling) Plain SW



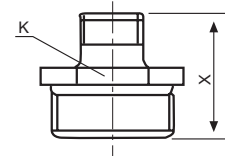
Unit:mm			
Size	øA	øB	L
1/8"	15.8	11.0	13.0
1/4"	20.0	14.4	14.6
3/8"	23.0	17.8	15.0
1/2"	27.8	22.0	18.5
3/4"	34.1	27.4	21.5
1"	42.2	34.1	22.5
1 1/4"	48.5	42.9	25.7
1 1/2"	56.4	48.9	28.6
2"	70.8	61.4	33.1
2 1/2"	86.5	74.1	37.8
3"	105.7	90.1	42.5
4"	132.0	115.7	48.5

MV-11A Hexagon Nipple



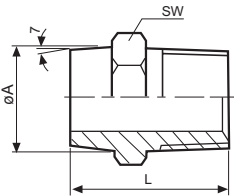
Unit:mm		
Size	O	K
1/8"	30.3	13.0
1/4"	32.0	15.0
3/8"	36.7	19.0
1/2"	42.0	23.0
3/4"	45.0	29.0
1"	48.4	35.5
1 1/4"	53.4	44.8
1 1/2"	55.5	50.1
2"	64.2	67.0
2 1/2"	76.0	78.0
3"	79.7	91.0
4"	85.3	117.0

MV-11B Reducing Hexagon Nipple



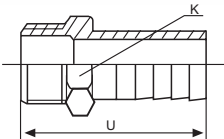
Unit:mm			Unit:mm		
SIZE	X	K	SIZE	X	K
1/4"x1/8"	30.1	15.0	1-1/2"x1"	53.0	50.0
3/8"x1/8"	36.0	18.9	1-1/2"x1-1/4"	55.0	50.0
3/8"x1/4"	34.7	18.9	2"x1/2"	55.0	67.0
1/2"x1/8"	34.0	23.0	2"x3/4"	57.6	67.0
1/2"x1/4"	34.0	23.0	2"x1"	58.0	67.0
1/2"x3/8"	39.7	23.0	2"x1-1/4"	60.0	61.0
3/4"x1/8"	37.0	29.0	2"x1-1/2"	62.0	61.0
3/4"x1/4"	37.0	29.0	2-1/2"x1"	63.0	79.0
3/4"x3/8"	42.0	29.0	2-1/2"x1-1/4"	66.0	79.0
3/4"x1/2"	43.9	29.0	2-1/2"x1-1/2"	68.0	79.0
1"x1/4"	39.0	35.8	2-1/2"x2"	77.0	75.3
1"x3/8"	45.0	35.8	3"x1"	68.0	91.0
1"x1/2"	43.6	35.8	3"x1-1/4"	72.0	91.0
1"x3/4"	50.0	37.0	3"x1-1/2"	72.0	91.0
1-1/4"x3/8"	46.0	46.0	3"x2"	72.4	91.0
1-1/4"x1/2"	50.0	46.0	3"x2-1/2"	78.0	92.0
1-1/4"x3/4"	52.0	46.0	4"x1-1/4"	82.0	123.0
1-1/4"x1"	54.0	49.2	4"x1-1/2"	82.0	123.0
1-1/2"x3/8"	48.0	51.0	4"x2"	82.0	123.0
1-1/2"x1/2"	51.0	51.0	4"x2-1/2"	82.0	123.0
1-1/2"x3/4"	53.0	51.0	4"x3"	94.0	114.4

MV-11C Hexagon Welding Nipple



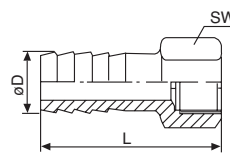
Unit:mm			
Size	øA	øB	L
1/8"	10.7	25.8	11.1
1/4"	14.0	30.6	14.3
3/8"	17.2	31.8	17.5
1/2"	20.7	36.4	22.2
3/4"	26.6	38.1	28.6
1"	32.9	42.9	34.9
1-1/4"	41.3	49.2	42.8
1-1/2"	48.8	54.0	50.8
2"	60.3	55.6	63.5
2-1/2"	76.1	70.0	80.0

MV-11D Hose Nipple



Unit:mm		
Size	K	U
1/8"	8.0	24.5
1/4"	10.0	37.0
3/8"	18.5	47.9
1/2"	23.0	50.0
3/4"	28.5	66.4
1"	36.0	68.0
1 1/4"	46.0	82.0
1 1/2"	51.0	91.2
2"	63.0	108.0
2 1/2"	78.0	132.0
3"	91.3	144.0
4"	120.0	149.0

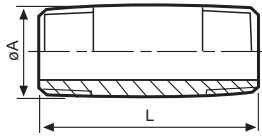
MV-11E Hose Nipple Female



Unit:mm			
Size	øD	L	SW
1/8"	6.5	39.0	15.0
1/4"	9.0	42.0	19.0
3/8"	11.0	53.0	22.0
1/2"	14.0	62.0	27.0
3/4"	20.5	63.5	32.0
1"	27.0	66.0	38.0
1-1/4"	33.0	74.0	50.0
1-1/2"	39.5	87.5	55.5
2"	52.0	94.5	67.5

MAXVALUE INDUSTRIES CO.,LTD.

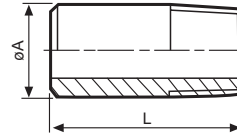
MV-11F Barrel Nipple



Unit:mm

Size	øA	L
1/8"	10	40.0
1/4"	13.5	40.0
3/8"	17.0	40.0
1/2"	21.0	60.0
3/4"	27.0	60.0
1"	33.5	60.0
1-1/4"	42.0	80.0
1-1/2"	48.0	80.0
2"	60.5	100.0
2-1/2"	76.0	100.0
3"	89.0	120.0
4"	114.0	120.0

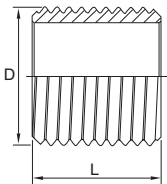
MV-11G Welding Nipple



Unit:mm

Size	øA	L
1/8"	10	30.0
1/4"	13.5	30.0
3/8"	17.0	30.0
1/2"	21.0	35.0
3/4"	27.0	40.0
1"	33.5	40.0
1-1/4"	42.0	50.0
1-1/2"	48.0	50.0
2"	60.5	50.0
2-1/2"	76.0	60.0
3"	89.0	70.0
4"	114.0	80.0

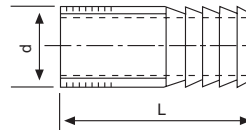
MV-11H Parallel Nipple



Unit:mm

Size	L	D
1/8"	16	10.2
1/4"	18	13.5
3/8"	22	17.2
1/2"	25	21.3
3/4"	30	26.9
1"	35	33.7
1 1/4"	38	42.4
1 1/2"	38	48.3
2"	45	60.3
2 1/2"	55	76.1
3"	60	88.9
4"	70	114.3

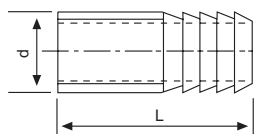
MV-11I Hose Nipple With Thread End



Unit:mm

Size	L	D
1/8"	70	10.2
1/4"	70	13.5
3/8"	70	17.2
1/2"	75	21.3
3/4"	75	26.9
1"	80	33.7
1 1/4"	90	42.4
1 1/2"	90	48.3
2"	95	60.3
2 1/2"	105	76.1
3"	110	88.9
4"	115	114.3

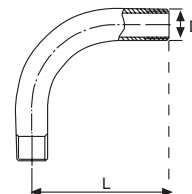
MV-11J Hose Nipple With Butt Weld End



Unit:mm

Size	L	D
1/4"	70	13.5
3/8"	70	17.2
1/2"	70	21.3
3/4"	70	26.9
1"	70	33.7
1 1/4"	70	42.4
1 1/2"	100	48.3
2"	100	60.3
2 1/2"	110	76.1
3"	120	88.9

MV-12A 90° Bend F/F

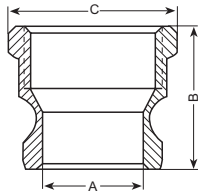


Unit:mm

Size	L	D
1/8"	50	10.2
1/4"	60	13.5
3/8"	70	17.2
1/2"	80	21.3
3/4"	100	26.9
1"	120	33.7
1 1/4"	140	42.4
1 1/2"	160	48.3
2"	190	60.3
2 1/2"	240	76.1
3"	290	88.9

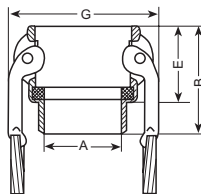
QUICK COUPLINGS

Type A - Adapter female thread



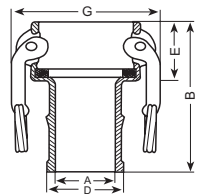
DIM	1/2	3/4	1	1 1/4	1 1/2	2	2 1/2	3	4	6
A	16.5	21	24	28.8	36	45.8	56.5	73.6	101	150
B	38	38	48	56	58	61	87	71	83.6	86
C	32.5	32.5	39	48	56	67.5	83	97	123.5	190

Type B - Coupler male thread



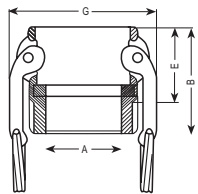
DIM	1/2	3/4	1	1 1/4	1 1/2	2	2 1/2	3	4	5	6
A	14	19	24	28	35	48	58	72	98	122	145
B	52	52	64	72	73	80	90	94	101	102	118
E	32	32	40	48	49	54	59	60	62	62	72
G	53	54	61	79	83	94	109	130	158	184	219

Type C - Coupler hose shank



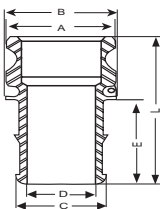
DIM	1/2	3/4	1	1 1/4	1 1/2	2	2 1/2	3	4	6
A	8	14	20	25	31	43	55	67	92	140
B	75	83	100	109	113	132	144	162	172	213
D	15	21.4	27.4	34	40.5	53	66.5	79.4	104.8	157
E	32	32	40	48	49	49	59	60	62	72
G	53	53	60	81.3	88.5	99.5	110.5	131	159	220

Type D - Coupler female thread



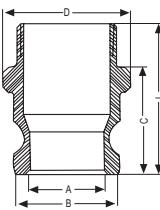
DIM	1/2	3/4	1	1 1/4	1 1/2	2	2 1/2	3	4	6
A	15	20	25	32	39	50	61	75	92	145
B	50	50	60	68	71	78	85	90	96	118
E	32	32	40	48	49	54	59	60	62	72
G	53	53	60	81.3	88.5	99.5	110.5	131	159	220

Type E - Adapter hose shank



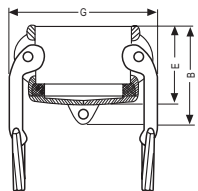
DIM	1/2	3/4	1	1 1/4	1 1/2	2	2 1/2	3	4	6
A	32	32	36.6	45	53.4	63	75.7	91.5	119.5	176
B	34.5	34.5	39	48	56	65.3	80	96	122	188
C	15	21.4	27.4	34	40.5	53	66.5	79	104.8	157
D	8	14	20	25	31	43	55	68	92	140
E	45	54	60	61	64	78	85	101.6	110	141
L	85	94	106	115	120	140	150	165.1	180	220

Type F - Adapter male thread



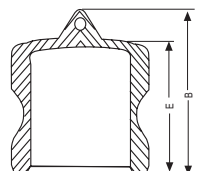
DIM	1/2	3/4	1	1 1/4	1 1/2	2	2 1/2	3	4	6
A	14	21	24	28.8	36	45	56.5	75.8	98	150
B	32	32	36.6	45.5	53.4	63	75.7	91.5	119.5	176
C	40	40	48	56	58	62	70	77	79	86
D	32.5	32.5	39	48	56	67	83	99.6	124	182
L	57	57	72	80	82	88	100	100.5	115	130

Type DC - Dustcap



DIM	1/2	3/4	1	1 1/4	1 1/2	2	2 1/2	3	4	6
B	43.5	43.5	55	65	68	77	82	88	94	112
E	36	36	43	51	52	59	64	65	70	82
G	53	53	60	81.3	88.5	99.5	110.5	131	159	220

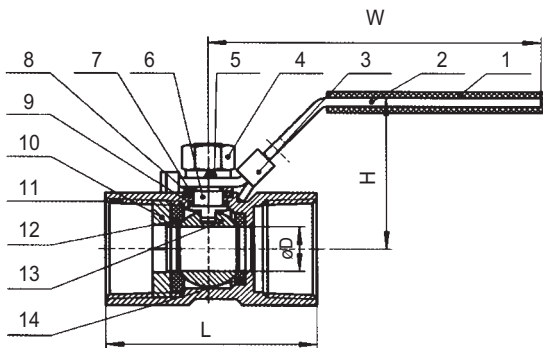
Type DP - Dustplug



DIM	1/2	3/4	1	1 1/4	1 1/2	2	2 1/2	3	4	6
B	37.5	37.5	44	55	60	65	68	73	76	90
E	26.5	26.5	34	41	44	48	50	53	56	64

MV-V1A

1PC S. S. Reduced Port Ball Valve



- Pipe thread as per ANSI B1.20.1, BS 21, DIN2999/259 and BSP.
- Material: A351-CF8M, A351-CF8.
- Pressure: 1000psi(7.0MPa)
- Locking device(option).

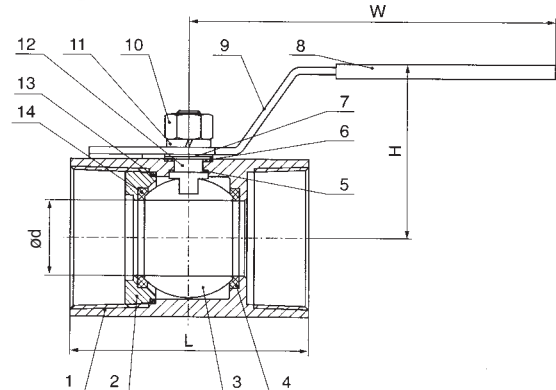
ITEM	PART	MATERIAL
1	Plastic cover	Plastic
2	Handle	304
3	Locking	304
4	Stem Nut	304
5	Spring Washer	304
6	Stem	304/316
7	Pack Ring	304
8	Stem Packing	PTFE
9	Thrust Washer	PTFE
10	Cap	CF8/CF8M
11	Body	CF8/CF8M
12	Ball Seat(A)	RPTFE
13	Ball	CF8M
14	Ball Seat(B)	RPTFE

Dimension(mm)

SIZE	D	L	H	W
1/4"	5	39	33	68.5
3/8"	7	44	35	90
1/2"	9.2	57	40	98
3/4"	12.5	59	44	98
1"	15	71	51	111
1-1/4"	20	78	57	111
1-1/2"	25	83	64	139
2"	32	100	70	139
2 1/2"	38	128	70	189
3"	50	153	77	189

MV-V1B

1PC S. S. Reduced Port Ball Valve



- Pipe thread as per ANSI B1.20.1, BS 21, DIN2999/259 and BSP.
- Material: A351-CF8M, A351-CF8.
- Pressure: 1000psi(7.0MPa)

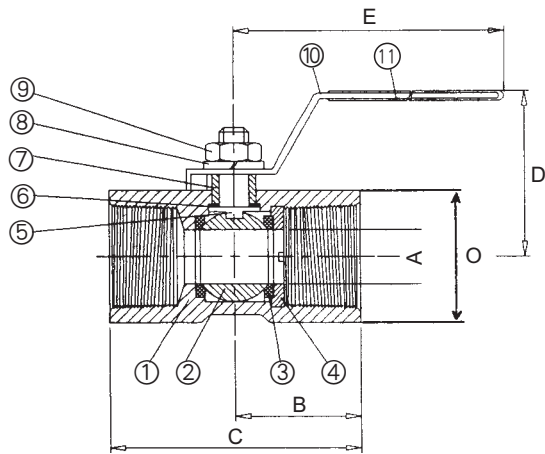
ITEM	PART	MATERIAL
1	Body	316
2	Cap	CF8M
3	Ball	CF8M
4	Seat	R-PTFE
5	Thrust Washer	R-PTFE
6	Thrust Washer	R-PTFE
7	Thrust Washer	304
8	Handle Cover	Plastic
9	Handle	304
10	Nut	304
11	Washer	302
12	Stem	316
13	Gasket	R-PTFE
14	Seat	R-PTFE

Dimension(mm)

SIZE	d	L	H	W
1/4"	4.6	43	30	80
3/8"	6.8	48	32	80
1/2"	9.2	60	45	100
3/4"	12.5	66	53	106
1"	15	86	57	125
1-1/2"	25	102	68	150
2"	32	114	75	155

MV-V1C

1PC S. S. Reduced Port Ball Valve



- Pipe thread as per ANSI B1.20.1, BS 21, DIN2999/259 and BSP.
- Material: A351-CF8M, A351-CF8.
- Pressure: 1000psi(7.0MPa)

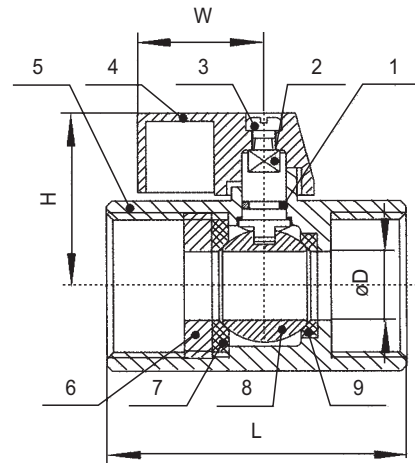
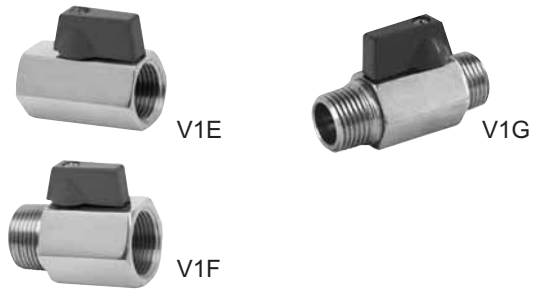
ITEM	PART	MATERIAL
1	Body	CF8M
2	Ball	316
3	Seat	RTFE
4	Body Insert	316
5	Stem	316
6	Thrust Washer	RTFE
7	Gland Bushing	316
8	Stem Washer	316
9	Stem Nut	316
10	Handle Cover	Plastic

Dimension(mm)

SIZE	A	B	C	D	E	O
1/4"	5	26	52	40	88	31
3/8"	8	25	50	38	100	28
1/2"	10	30	60	40	102	31
3/4"	13	34	68	47	105	36
1"	17	36	72	47	105	42
1.1/4"	22	44	88	60	142	53
1.1/2"	25	49	98	65	152	60
2"	32	55	110	68	160	72

MV-V1E/V1F/V1G

1PC S. S. Mini Reduced Port Ball Valve



- Pipe thread as per ANSI B1.20.1, BS 21, DIN2999/259 and BSP.
- Material: A351-CF8M, A351-CF8.
- Pressure: 1000psi(7.0MPa)

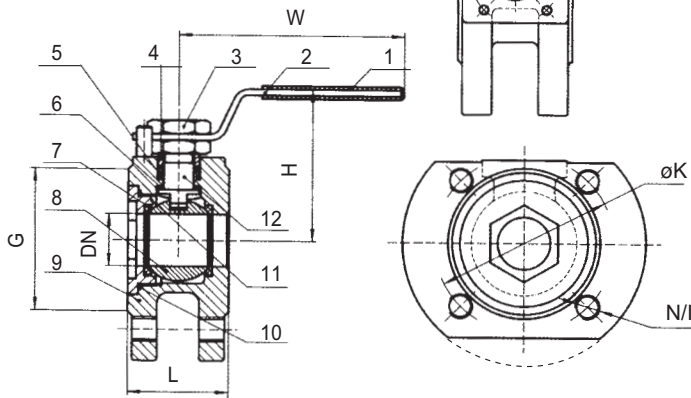
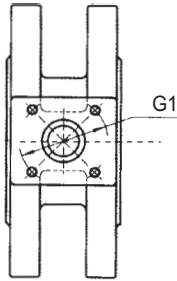
ITEM	PART	MATERIAL
1	O-Ring	VITON
2	Stem	304
3	Bolt	304
4	Lever	Aluminum Alloy
5	Body	CF8M
6	Cap	CF8M
7	Ball Seat(A)	RPTFE
8	Ball	CF8M
9	Ball Seat(B)	RPTFE

Dimension(mm)

SIZE	D	L			H	W
		V1E	V1F	V1G		
1/4"	7	42	42	50	26.5	22.8
3/8"	7	42	42	50	26.5	22.8
1/2"	9.2	46	46	58	28.3	22.8
3/4"	12.5	54	54	70	31.5	22.8
1"	15	65	65	83	34	22.8

MV-V1H

1PC Wafer Type Ball Valve Flanged End



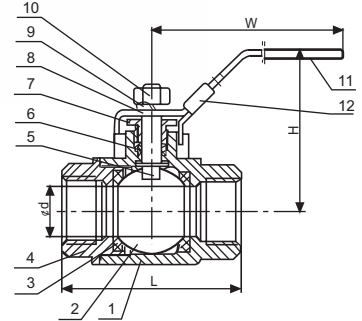
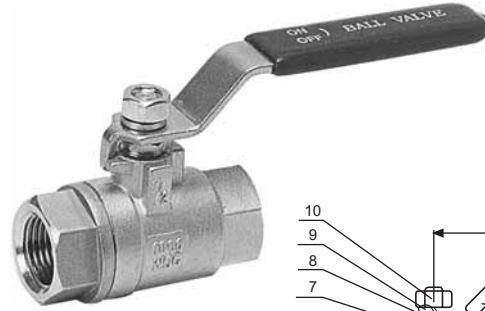
ITEM	PART	MATERIAL
1	PLASTIC COVER	PLASTIC
2	HANDLE	304
3	NUT	304
4	RING	304
5	STEM PACKING	PTFE
6	STEM SEAL	PTFE
7	BALL SEAT	RPTFE
8	BALL	CF8M
9	BODY	CF8M
10	BODY SEAL	PTFE
11	CAP	CF8M
12	STEM	304/316

Dimension(mm)

SIZE	L	K	N/I	G	ISO5211G1	H	W
1/2"	40	65	4-M12X1.75	45	F03	63	125
3/4"	44	75	4-M12X1.75	58	F03	68	125
1"	48	85	4-M12X1.75	68	F04	80	167
1 1/4"	54	100	4-M16X2	78	F04	87	167
1 1/2"	62	110	4-M16X2	88	F05	104	190
2"	71	125	4-M16X2	102	F05	110	195
2 1/2"	90	145	4-M16X2	122	F07	128	310
3"	110	160	8-M16X2	138	F07	135	310
4"	135	180	8-M16X2	158	90	151	295
5"	197	210	8-M16X2	188	90	192	295
6"	231	240	8-M20X25	212	100	231	350

MV-V2A/V2B/V2C

2PC S. S. Full Port Ball Valve



- Pipe thread as per ANSI B1.20.1, BS 21, DIN2999/259 and BSP.
- Material: A351-CF8M, A351-CF8.
- Pressure: 1000psi (7.0MPa).
- Locking device and actuator mounting bracket (option).

ITEM	PART	MATERIAL
1	Body	CF8/CF8M
2	Ball	CF8M
3	Seat	R-PTFE
4	Cap	CF8/CF8M
5	Stem	304
6	Stem Packing	PTFE
7	Gland nut	304
8	Handle	304
9	Washer	304
10	Nut	304
11	Plastic Cover	Plastic
12	Lock Device	304

Dimension(mm)

Common Pattern

SIZE	1/4"	3/8"	1/2"	3/4"	1"	1-1/4"	1-1/2"	2"	2-1/2"	3"	4"
d	11	12.5	15	20	25	32	38	50	65	76	94
W	103	103	103	126	144	144	190	190	223	223	297
H	51	51	53	65	77	82	93	100	118	129	166
L	51	51	63	74	86	98	106	122	159	182	226

Economic Pattern

SIZE	1/4"	3/8"	1/2"	3/4"	1"	1-1/4"	1-1/2"	2"	2-1/2"	3"	4"
d	10	10	14.5	19	24	30	37	47	64	76	94
W	101	101	101	124	142	142	187	187	224	224	295
H	43	43	46	49	61	65	85	91	116	125	165
L	46	48	54	64	75	89	96	118	150	170	215

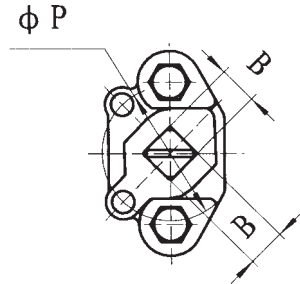
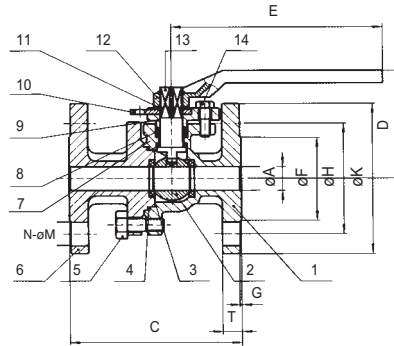
DIN3202-M3 Pattern

SIZE	1/4"	3/8"	1/2"	3/4"	1"	1-1/4"	1-1/2"	2"	2-1/2"	3"	4"
d	12.5	12.5	15	20	25	32	38	50	65	76	94
L	55	60	75	80	90	110	120	140	185	205	240
H	48	48	52	61	65	79	83	97	135	144	166
W	103	103	103	123	123	153	153	185	243	243	295

MV-V2I

2PC Full Port Ball Valve Flanged End

150LBS/300LBS PN10/16/25/40 JIS10K/20K



ITEM	MATERIAL	PART
1	CF8/CF8M	BODY
2	CF8M	BALL
3	RPTFE	BALL SEAT
4	PTFE	BODY SEAL
5	304	BOLT
6	304	NUT
7	CF8/CF8M	CAP
8	PTFE	STEM SEAL
9	PTFE	STEM PACKING
10	CF8/CF8M	GLAND
11	304	STOPPER
12	CF8M	HANDLE
13	304	SNAP RING
14	304	STEM
15	304	BOLT

Dimension(mm)

ITEM SIZE	A	B	D	E	P	150LBS								300LBS							
						F	H	K	T	G	N	M	C	F	H	K	T	G	N	M	C
1/2"	15	11	73	130	42	35	60.5	89	11	2	4	15	108	35	66.5	95	15	2	4	15	140
3/4"	20	11	76	130	42	43	70	98	11	2	4	15	117	43	82.5	117	16	2	4	19	152
1"	25	14	86	160	50	51	79.5	108	12	2	4	15	127	51	89	124	18	2	4	19	165
1 1/4"	32	14	91	160	50	64	89	117	13	2	4	15	140	64	98.5	133	19	2	4	19	178
1 1/2"	38	17	119	200	70	73	98.5	127	15	2	4	15	165	73	114.5	156	21	2	4	19	190
2"	50	17	127	200	70	92	120.5	152	16	2	4	19	178	92	127	165	23	2	8	19	216
2 1/2"	65	22	136	200	102	105	139.5	178	18	2	4	19	190	105	149	190	26	2	8	22	241
3"	76	22	164	325	102	127	152.5	190	19	2	4	19	203	127	168.5	210	29	2	8	22	283
4"	94	22	178	325	102	157	190.5	229	24	2	8	19	229	157	200	254	32	2	8	22	305

Dimension(mm)

ITEM SIZE	A	B	D	E	P	10K								20K							
						F	H	K	T	G	N	M	C	F	H	K	T	G	N	M	C
1/2"	15	11	73	130	42	52	70	95	12	1	4	15	108	52	70	95	14	1	4	15	140
3/4"	20	11	76	130	42	58	75	100	14	1	4	15	117	58	75	100	16	1	4	15	152
1"	25	14	86	160	50	70	90	125	14	1	4	19	127	70	90	125	16	1	4	19	165
1 1/4"	32	14	91	160	50	80	100	135	16	2	4	19	140	80	100	135	18	2	4	19	178
1 1/2"	38	17	119	200	70	85	105	140	16	2	4	19	165	85	105	140	18	2	4	19	190
2"	50	17	127	200	70	100	120	155	16	2	4	19	178	100	120	155	18	2	8	19	216
2 1/2"	65	22	136	200	102	120	140	175	18	2	4	19	190	120	140	175	20	2	8	19	241
3"	76	22	164	325	102	130	150	185	18	2	8	19	203	135	160	200	22	2	8	23	283
4"	94	22	178	325	102	155	175	210	18	2	8	19	229	160	185	225	24	2	8	23	305

Dimension(mm)

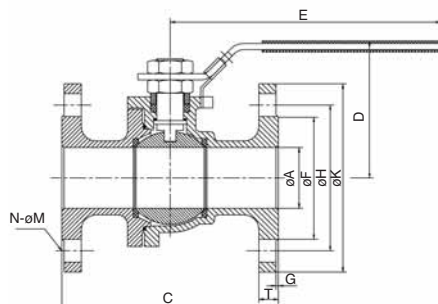
ITEM SIZE	A	B	D	E	C	PN10				PN16				PN25				PN40									
						F4	F5	F	H	K	T	G	M	N	F	H	K	T	G	M	N	F	H	K	T	G	M
1/2"	15	11	73	130	115	-	45	65	95	16	2	14	4	45	65	95	16	2	14	4	45	65	95	16	2	14	4
3/4"	20	11	76	130	120	-	58	75	105	18	2	14	4	58	75	105	18	2	14	4	58	75	105	18	2	14	4
1"	25	14	86	160	125	120	68	85	115	18	2	14	4	68	85	115	18	2	14	4	68	85	115	18	2	14	4
1 1/4"	32	14	91	160	130	140	78	100	140	18	2	18	4	78	100	140	18	2	18	4	78	100	140	18	2	18	4
1 1/2"	38	17	119	200	140	240	88	110	150	18	3	18	4	88	110	150	18	3	18	4	88	110	150	18	3	18	4
2"	50	17	127	200	150	250	102	125	165	18	3	18	4	102	125	165	20	3	18	4	102	125	165	20	3	18	4
2 1/2"	65	22	136	200	170	270	122	145	185	18	3	18	4	122	145	185	22	3	18	8	122	145	185	22	3	18	8
3"	76	22	164	325	180	280	138	160	200	20	3	18	8	138	160	200	24	3	18	8	138	160	200	24	3	18	8
4"	94	22	178	325	190	300	158	180	220	20	3	18	8	162	190	235	24	3	22	8	162	190	235	24	3	22	8

MV-V2J

2PC Full Port Ball Valve Flanged End



DIN PN10/16/25/40 Valve

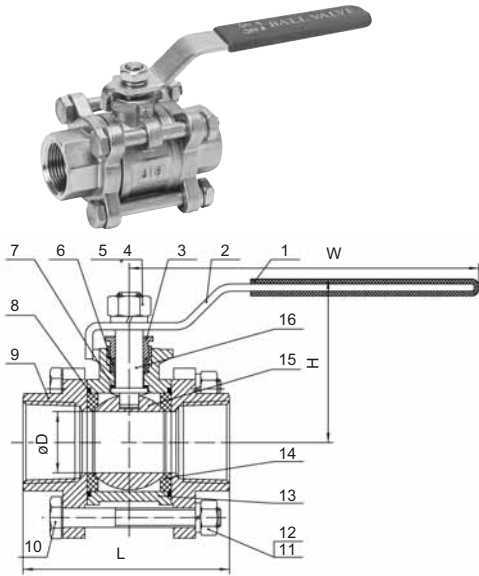


Dimension(mm)

SIZE	A	D	E	C	PN10				PN16						
					F4	F	H	K	T	G	M	N	F4	F	H
1/2"	15	73	130	115	45	65	95	14	2	14	4				
3/4"	20	76	130	120	58	75	105	16	2	14	4				
1"	25	86	160	125	68	85	115	16	2	14	4				
1 1/4"	32	91	160	130	78	100	140	16	2	18	4				
1 1/2"	40	119	200	140	88	110	150	16	3	18	4				
2"	50	127	200	150	102	125	165	18	3	18	4				
2 1/2"	65	136	200	170	122	145	185	18	3	18	4				
3"	76	164	325	180	138	160	200	20	3	18	8				
4"	100	178	325	190	158	180	220	20	3	18	8				

MV-V3A

3PC S. S. Full Port Ball Valve



- Pipe thread as per ANSI B1.20.1, BS 21, DIN2999/259 and BSP.
- Pressure: 1000psi (7.0MPA).
- Locking device (option).

ITEM	PARTS	MATERIAL
1	PLASTIC COVER	PLASTIC
2	HANDLE	304
3	GLAND NUT	304
4	STEM NUT	304
5	THRUST WASHER	304
6	STEM PACKING	PTFE
7	SEAL	PTFE
8	SEAL	PTFE
9	CAP	CF8M
10	BOLT	304
11	NUT	304
12	THRUST WASHER	304
13	BODY	CF8/CF8M
14	SEAT	RPTFE
15	BALL	CF8M
16	STEM	304/316

Dimension(mm)

Common Pattern

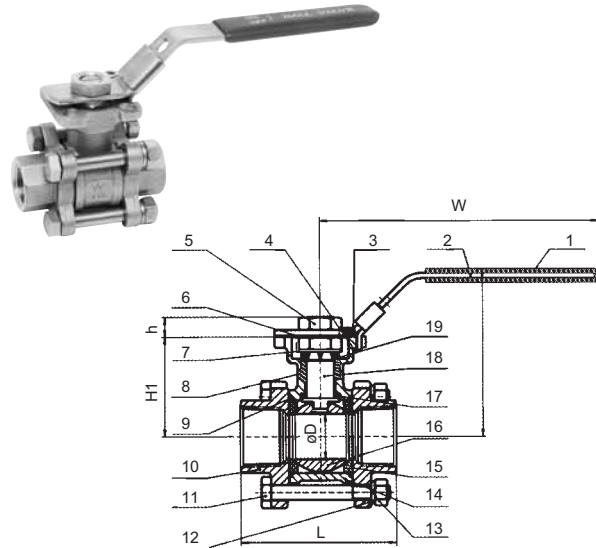
SIZE	D	L	H	W
1/4"	11	64	48	105
3/8"	12.5	64	48	105
1/2"	15	72	50	105
3/4"	20	80	56	126
1"	25	85	67	144
1-1/4"	32	105	72	144
1-1/2"	38	113	93	189
2"	50	132	101	189
2-1/2"	65	170	125	224
3"	76	186	135	224
4"	94	226	168	298

DIN3202-M3 Pattern

SIZE	1/4"	3/8"	1/2"	3/4"	1"	1-1/4"	1-1/2"	2"	2-1/2"	3"	4"
L	50	60	75	80	90	110	120	140	185	205	240
W	101	101	101	124	142	142	187	187	224	224	295

MV-V3E

3PC S. S. Full Port Ball Valve With Mounting Pad



- Pipe thread as per ANSI B1.20.1, BS 21, DIN2999/259 and BSP.
- Pressure: 1000psi (7.0MPA).
- Locking device (option).

ITEM	PARTS	MATERIAL
1	PLASTIC COVER	PLASTIC
2	HANDLE	304
3	BOLT	304
4	NUT	304
5	STEM NUT	304
6	ADJUSTABLE RING	304
7	THRUST WASHER	304
8	STEM PACKING	PTFE
9	BODY SEAL	PTFE
10	CAP	CF8/CF8M
11	BOLT	304
12	THRUST WASHER	304
13	NUT	304
14	BODY	CF8/CF8M
15	BALL SEAT	RPTFE
16	BALL	CF8/CF8M
17	STEM SEAL	PTFE
18	STEM	304/316
19	GLAND RING	304/316

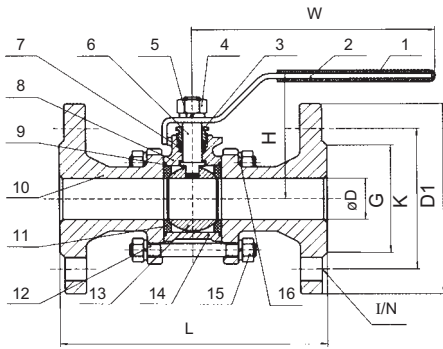
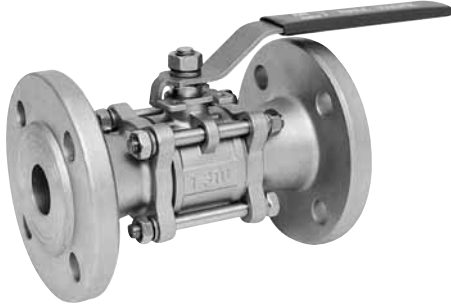
Dimension(mm)

SIZE	D	L	H	W	H1	h	⊠	ISO5211
1/4"	12.5	64.3	68.4	140	38.4	9	9	F03/F04
3/8"	12.5	64.3	68.4	140	38.4	9	9	F03/F04
1/2"	15	72	72	140	42	9	9	F03/F04
3/4"	20	80	78	140	48	9	9	F03/F04
1"	25	85	90.3	165	55	11	11	F04/F05
1-1/4"	32	105	95.3	165	60	11	11	F04/F05
1-1/2"	38	113	107	188	70	15	14	F05/F07
2"	50	132.4	122	188	85	15	14	F05/F07
2-1/2"	65	170	155	233	109	20	17	F07/F10
3"	76	186.3	164	233	118	20	17	F07/F10
4"	94	226	170	233	115.5	20	17	F07/F10

MV-V3I

3PC Ball Valve Flanged End

ANSI 150LBS PN16/PN40

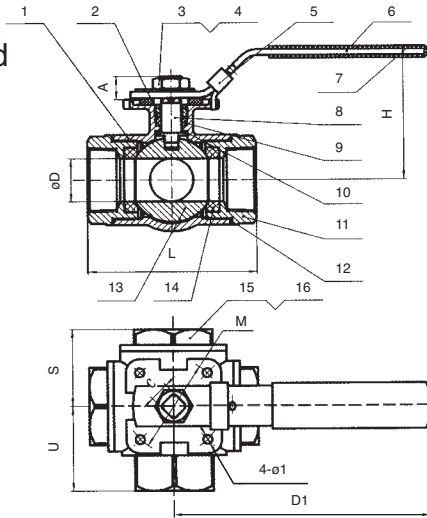


ITEM	PARTS	MATERIAL
1	PLASTIC COVER	PLASTIC
2	HANDLE	304
3	GLAND NUT	304
4	STEM NUT	304
5	THRUST WASHER	304
6	STEM	304/316
7	STEM PACKING	PTFE
8	BODY	PTFE
9	BODY SEAL	PTFE
10	CAP	CF8/CF8M
11	BALL SEAT	RPTFE
12	BOLT	304
13	BALL	CF8M
14	BODY	CF8/CF8M
15	NUT	304
16	THRUST WASHER	304

ITEM SIZE	D	H	W	PN ANSI		DIN PN16					DIN PN40					ANSI 150				
				L	L	D1	K	G	B	I/N	D1	K	G	B	I/N	D1	K	G	B	IN
1/2"	15	79	160	130	108	95	65	45	14	14/4	95	65	45	16	14/4	89	60.5	35	11.2	16/4
3/4"	20	84	160	150	117	105	75	58	16	14/4	105	75	58	18	14/4	98	70	43	12.7	16/4
1"	25	100	185	160	127	115	85	65	16	14/4	115	85	68	18	14/4	108	79.5	51	14.3	16/4
1 1/4"	32	105	185	180	140	140	100	78	16	18/4	140	100	78	18	18/4	117	89	64	15.9	16/4
1 1/2"	40	115	220	200	165	150	110	88	16	18/4	150	110	88	18	18/4	127	98.5	73	17.5	16/4
2"	50	124	220	230	178	165	125	102	18	18/4	165	125	102	20	18/4	152	120.5	92	19.1	19/4
2 1/2"	65	165	305	290	190	185	145	122	18	18/4	185	145	122	22	18/8	178	139.5	105	22.3	19/4
3"	80	177	305	310	203	200	160	138	20	18/8	200	160	138	24	18/8	190	152.5	127	23.9	19/4
4"	94	203	330	350	229	220	180	158	20	18/8	235	190	162	24	22/8	229	190.5	157	23.9	19/8

MV-V4A

3-Way Ball Valve Type L/T With Mounting Pad



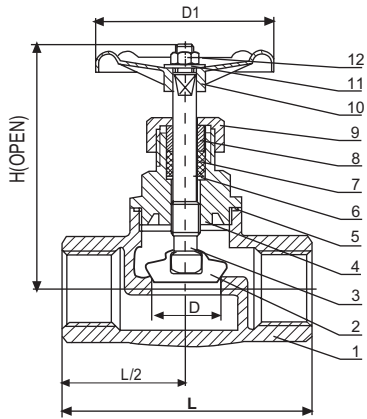
ITEM	PARTS	MATERIAL
1	BODY	CF8/CF8M
2	GLAND NUT	304
3	FLOW INDICATION PLATE	ALUMINUM
4	STEM NUT	304
5	LOCKING	304
6	HANDLE	304
7	PLASTIC COVER	PLASTIC
8	STEM	304
9	STEM PACKING	PTFE
10	STEM SEAL	PTFE
11	CAP	CF8/CF8M
12	BODY SEAL	PTFE
13	BALL	CF8M
14	BALL SEAT	RPTFE
15	BLIND CAP	CF8M
16	BLIND CAP SEAL	PTFE

PORT TYPE	1	2	3	4
L	1 3	1 3	1 3	1 3
T	1 3	1 3	1 3	1 3

ITEM SIZE	D	L	C	H	D1	M	ø1	A	S	U
1/2"	12.7	75	9	68	116	42	6	10	33	37.5
3/4"	16	85	9	73	116	42	6	10	39.5	42.5
1"	20	100	11	83	152	50	7	12	50	52
1-1/4"	25	115	11	89	152	50	7	12	50.5	57.5
1-1/2"	32	124	14	97	187	70	9	16	57	62
2"	38	147	14	106	187	70	9	16	65	75

MV-V6A

200 WOG Globe Valve



- Pipe thread as per ANSI B1.20.1, BS 21, DIN2999/259 and BSP.
- Material: A351-CF8M, A351-CF8.
- Pressure: 200psi (1.6MPA)

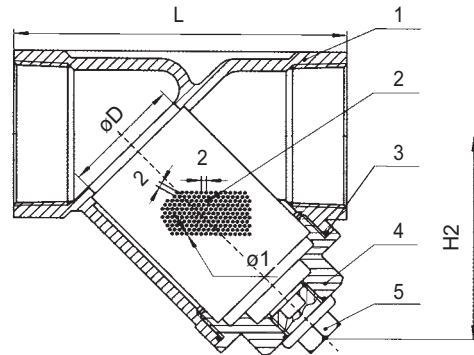
ITEM	PART	MATERIAL
1	Body	CF8/CF8M
2	Disc	304/316
3	Stem	316
4	Cap	CF8/CF8M
5	Gasket	PTFE
6	Washer	304/316
7	Stem Packing	PTFE
8	Ring	304/316
9	Gland Nut	CF8/CF8M
10	Handwheel	Aluminium Alloy
11	Name Plate	Aluminium Alloy
12	Nut	304

Dimension(mm)

SIZE	D	D1	L	H
1/2"	15	70	66	100
3/4"	20	70	80	106
1"	25	80	90	118
1-1/4"	32	80	105	134
1-1/2"	40	100	120	152
2"	50	100	141	172

MV-V8A

Y-Type Strainer



- Pipe thread as per ANSI B1.20.1, BS 21, DIN2999/259 and BSP.
- Material: A351-CF8M, A351-CF8.
- Pressure: 800psi (2.0MPA)

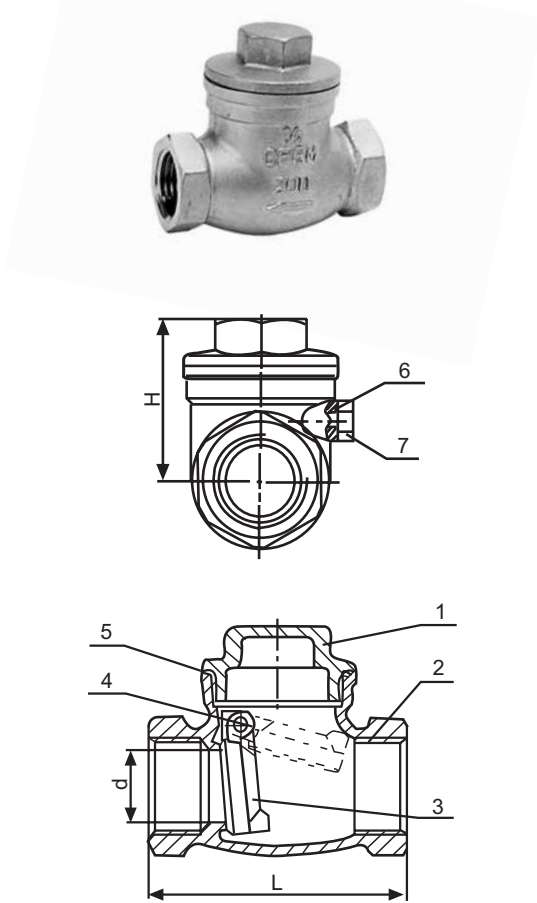
ITEM	PART	MATERIAL
1	BODY	CF8/CF8M
2	SCREEN	304
3	GASKET	PTFE
4	BONNET	CF8/CF8M
5	DISCHARGE PLUG	CF8/CF8M

Dimension(mm)

SIZE ITEM	1/4"	3/8"	1/2"	3/4"	1"	1-1/4"	1-1/2"	2"
D	10	12	15	20	25	32	40	50
L	65	65	65	80	90	105	120	140
H2	51	51	51	60	72	77	87	103

MV-V7A

200 WOG Swing Check Valve



- Pipe thread as per ANSI B1.20.1, BS 21, DIN2999/259 and BSP.
- Material: A351-CF8M, A351-CF8.
- Pressure: 200psi (1.6MPa)

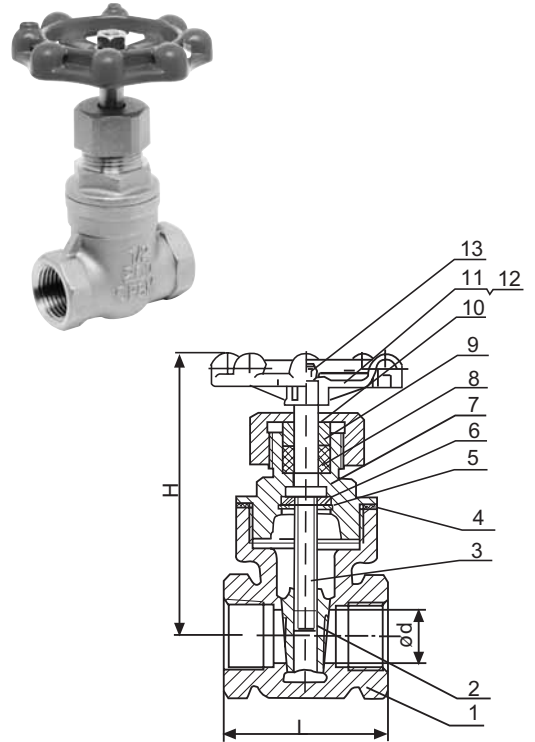
ITEM	PART	MATERIAL
1	Cap	CF8/CF8M
2	Body	CF8/CF8M
3	Disc	CF8/CF8M
4	Pin	304
5	Gasket	PTFE
6	Gasket	PTFE
7	Bolt	304

Dimension(mm)

SIZE	d	L	H
1/2"	15	65	43
3/4"	20	80	53
1"	25	90	60
1-1/4"	32	105	60
1-1/2"	40	120	75
2"	50	140	79

MV-V5A

200 WOG Gate Valve



- Pipe thread as per ANSI B1.20.1, BS 21, DIN2999/259 and BSP.
- Material: A351-CF8M, A351-CF8.
- Pressure: 200psi (1.6MPa)

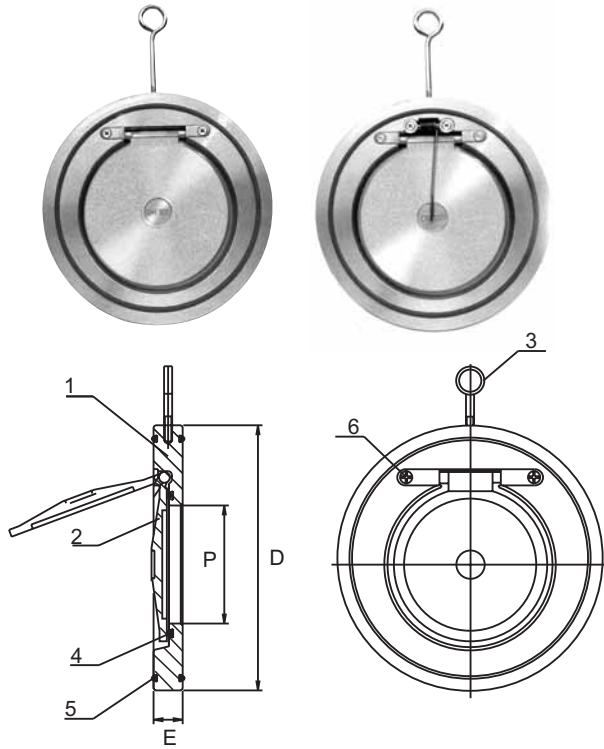
ITEM	PART	MATERIAL
1	Body	CF8/CF8M
2	Disc	CF8/CF8M
3	Stem	316
4	Gasket	PTFE
5	Baffle Washer	304
6	Ring	304
7	Bonnet	CF8/CF8M
8	Stem Packing	PTFE
9	Gland Ring	CF8/CF8M
10	Gland Nut	304
11	Handwheel	Aluminium Alloy
12	Name Plate	Aluminium Alloy
13	Nut	304

Dimension(mm)

SIZE	d	L	H
1/2"	15	55	92
3/4"	20	60	99
1"	25	66	113
1-1/4"	32	76	128
1-1/2"	40	86	147
2"	50	96	168

MV-V9A

Single-Plate Wafer Check Valve



ITEM	PART	MATERIAL
1	Body	SS316/WCB
2	Disc	SS316/WCB
3	Hanger	SS316/WCB
4	O-Ring	NBR/EPDM/VITON
5	O-Ring	NBR/EPDM/VITON
6	Bolt	SS316/WCB

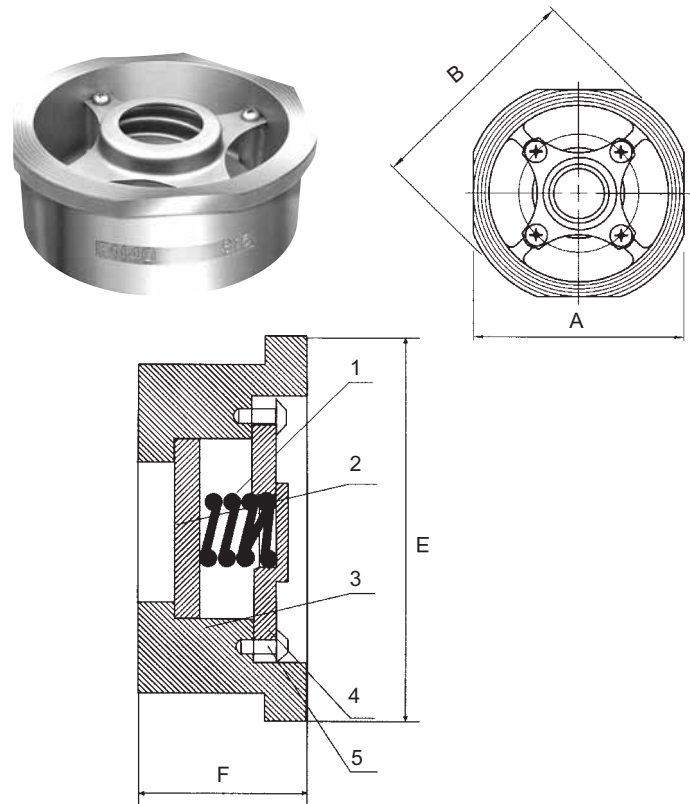
Normal pressure	PN16	CL150(PN20)	CL300(PN50)
Seal test pressure	1.76MPa	2.2MPa	5.5MPa
Strength test pressure	2.4MPa	3.0MPa	7.5MPa
Suitable temperature	NBR:-10-+80°C		
	EPDM:-10-+120°C		
	VITON:-10-+150°C		

Dimension(mm)

DN	D				P	E		
	PN16	Table D	ANSI 125/150	ANSI 300		PN16	ANSI 150	ANSI 300
40	92	85	85	95	22	14	19	19
50	109	98	105	111	32	14	19	19
65	129	111	124	130	40	14	19	19
80	144	130	136	149	54	14	19	19
100	164	162	175	181	70	18	19	19
125	194	194	197	216	92	18	19	19
150	220	219	222	251	114	20	19	22
200	275	276	279	308	154	22	28	28
250	330	337	340	362	200	26	28	38
300	380	387	410	422	235	28	38	51
350	440	448	451	485	280	38	44	51
400	491	499	515	540	316	44	51	51

MV-V9B

1PC Wafer Disc Check Valve



ITEM	PART	MATERIAL
1	SPRING	AISI316
2	DISC	CF8M
3	BODY	CF8M/WCB
4	CAP	AISI316
5	BOLT	AISI316

NORMAL PRESSURE	PN25	PN40
SHELL TEST PRESSURE	3.75MPa	6.0MPa
SEAL TEST PRESSURE	2.75Mpa	4.4MPa

Dimension(mm)

SIZE	A	B	E	F
15	45	53	43	16
20	55	63	53	19
25	65	73	63	22
32	78	84	75	28
40	88	94	86	31.5
50	98	109	95	40
65	118	129	115	46
80	134	144	131	50
100	154	170	151	60
125	/	194	/	90
150	/	224	/	106
200	/	286	/	140